

Pierce County Superior Court
Juror Summons Study

The following information only relates to the juror summons data provided for Pierce County Superior Court, Pierce County District Court and Tacoma Municipal Court.

Pierce County Jury Administration provides juror summons' for twenty-one (21) other jurisdictions, but we do not receive the outcomes for those summons'.

How did we get here?

- Comprehensive review of Jury Administration
- “Could we tell a story based on what the raw data was telling us?”
- Pierce County’s Geographic Information System (GIS) Department created Heat Maps based on our Juror Summons statistical data
- “Could we have an impact on the makeup of potential jurors who make it into the doors of the County-City Building?”

Goals of the Study

- Encourage Jury Service
- Provide a representative/diverse jury for those involved in the Court system
- Increase access to justice for all
- Decrease the number of juror summons sent on an annual basis
- Increase Communication with Stakeholders
- Engage with the public to increase understanding and trust of the Court
- Create opportunities for dialogue
- Develop the relationship between the Court and Pierce County Municipalities

Jury Summons Definitions

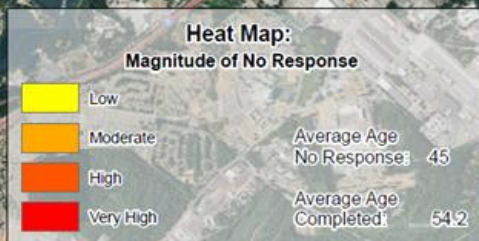
- Undeliverable – Summons is returned by the post office as undeliverable or moved with no forwarding address.
- Summoned – Summons is not responded to in any way.
- Completed – Responded to the summons and made it in our doors.
- Sworn/Seated – Assigned to a jury.
- Not Qualified – Automatic excusals for jurors who do not live in the county, are not US citizens, English as a second language (optional to remain), or a felon without their rights restored.
- Expected – Jurors respond to the blue post card on the phone or web site and our system and if qualified a red and white summons is mailed. The jurors marked expected have not yet appeared for jury duty. This designation is a tool for the court to know how many jurors are available each week.
- Excused – Court has approved a juror's request to be excused for work, health reasons, military, first responders, jury duty within one year, student (current class schedule requested) or religious reasons. Care for dependents and children are automatic excusals.

Juror Response in the City of Lakewood

This Heat Map was created to display areas in the City of Lakewood with increased concentrations of jury summons with no response. 31% of jury summons in Lakewood were not responded to.

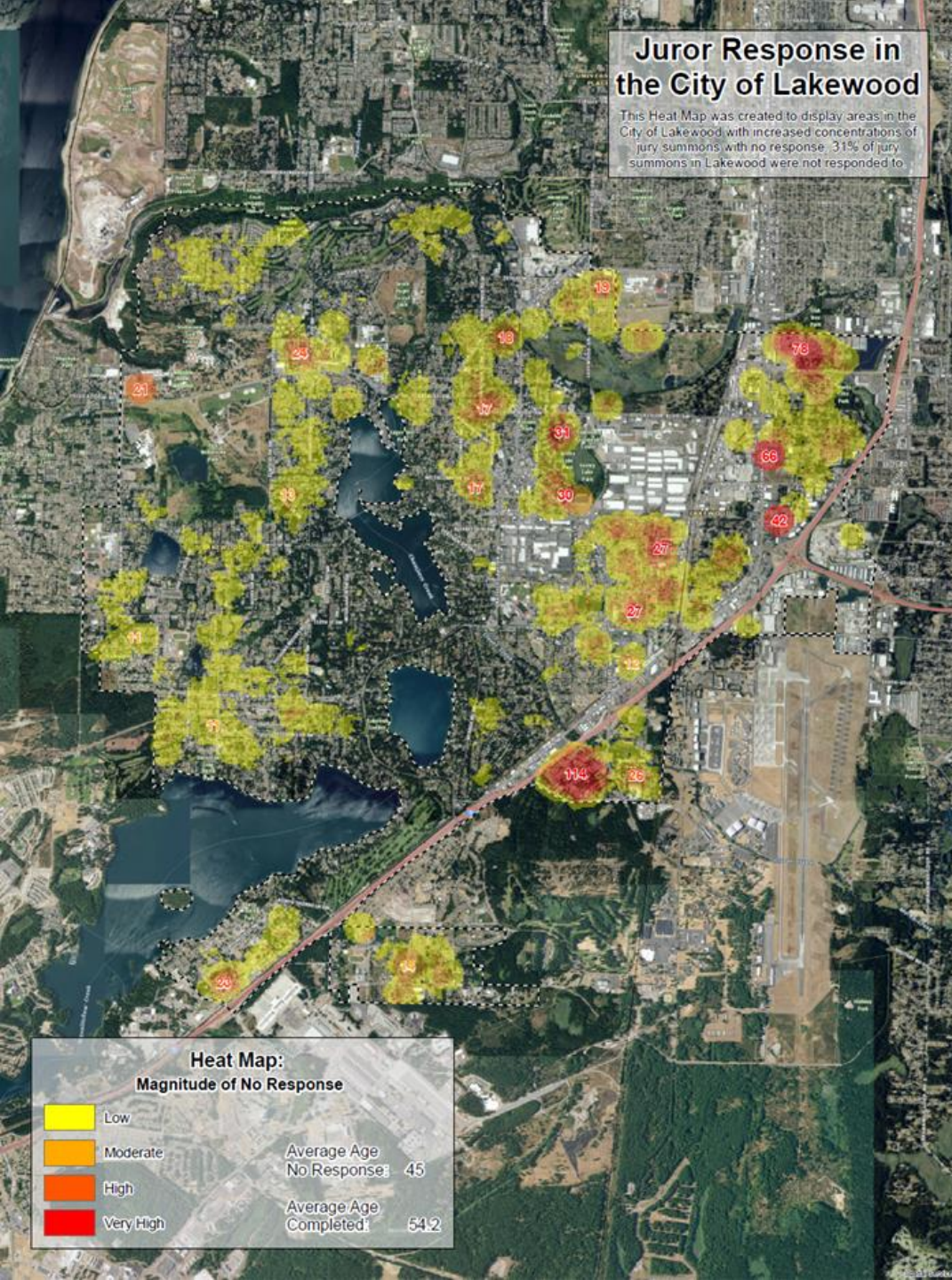
City of Lakewood

- Population – 58,613 (2010)
 - 59% White
 - 15% Hispanic/Latino
 - 12% African American
- “No Response” Rate 31%
- Avg. Age “No Response” 45
- Avg. Age Completed 54.2



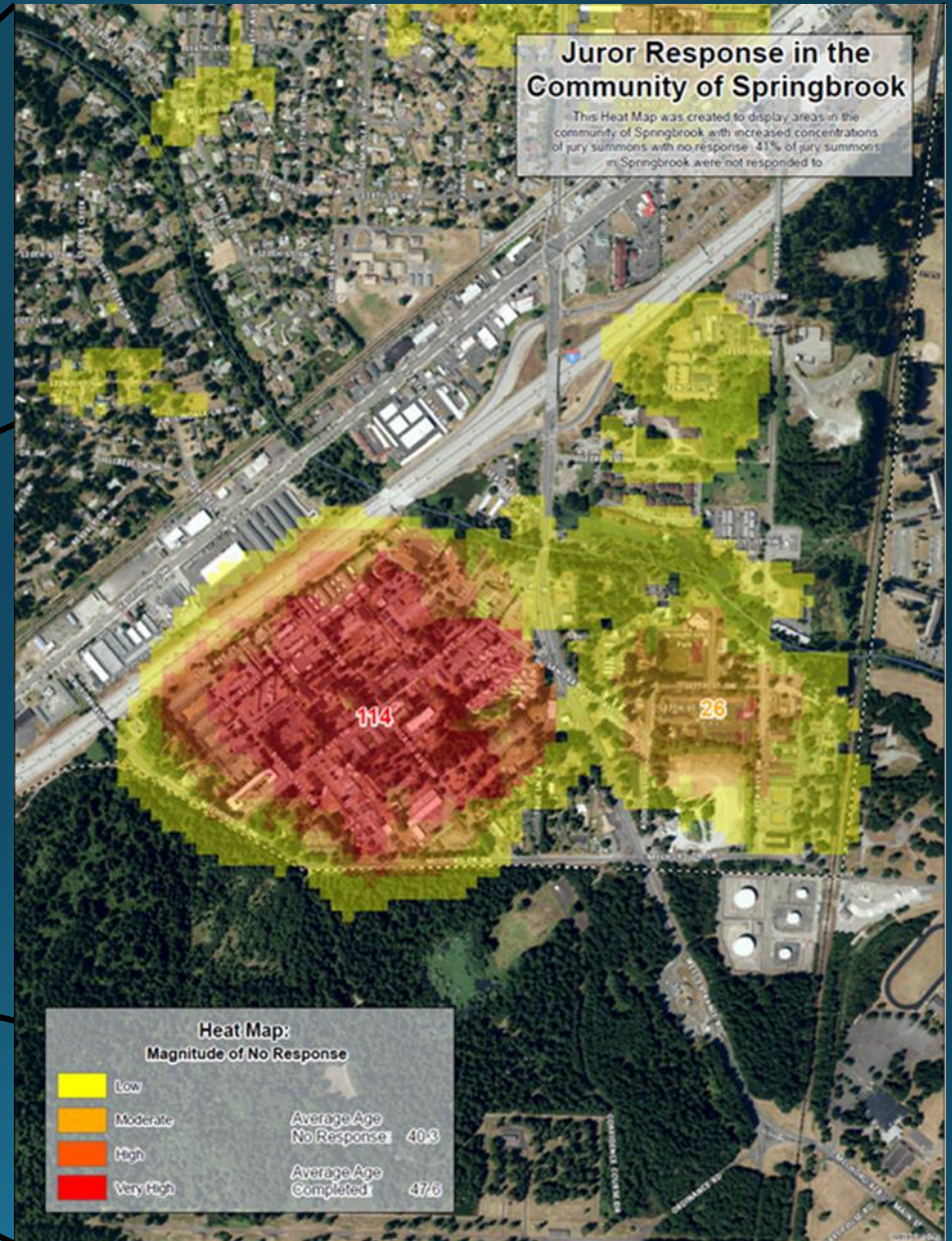
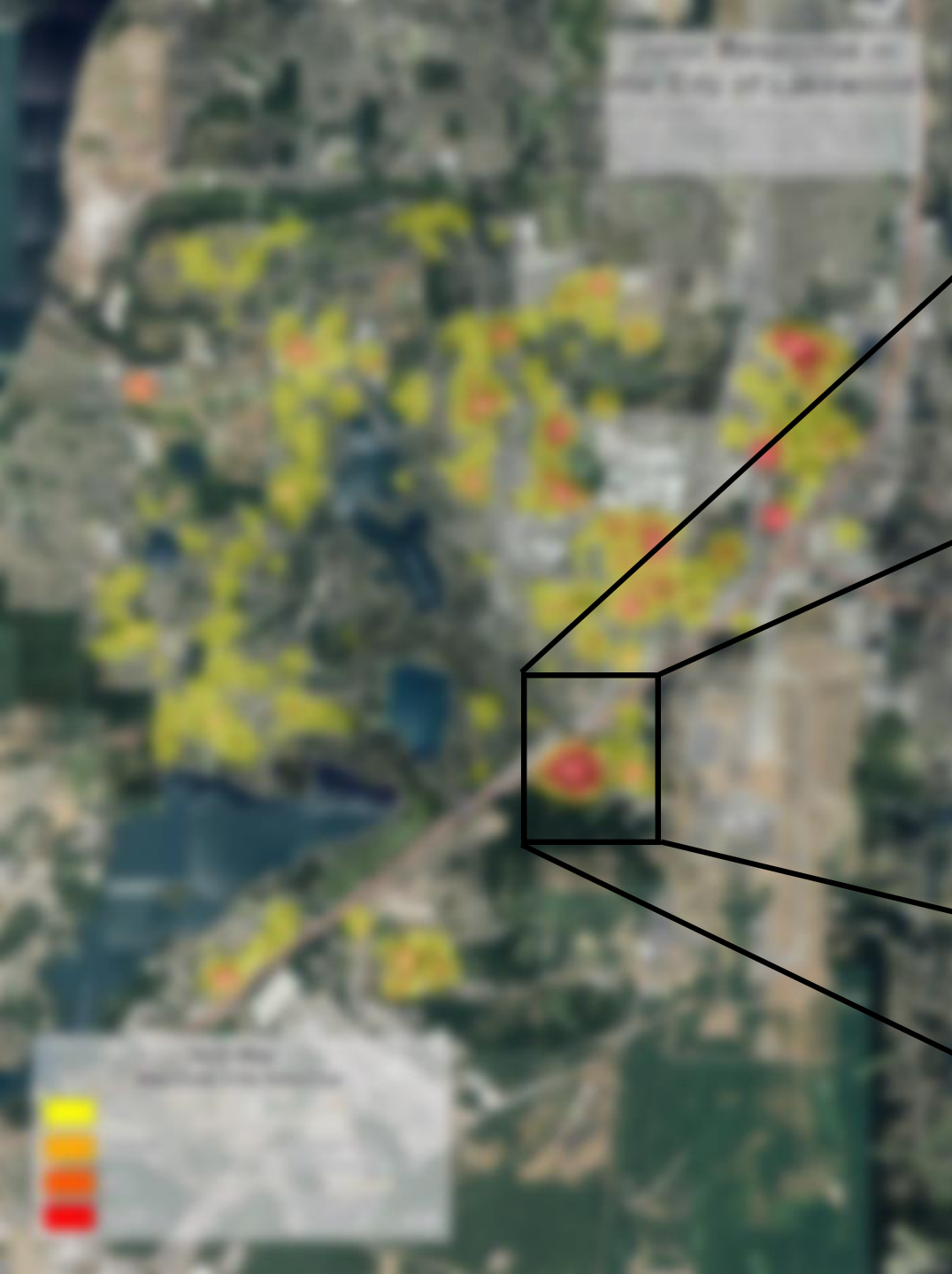
Juror Response in the City of Lakewood

This Heat Map was created to display areas in the City of Lakewood with increased concentrations of jury summons with no response. 31% of jury summons in Lakewood were not responded to.



City of Lakewood (Cont.)

- 6873 Summons sent in 2016
- 840 Completed, 12.2%
- 1249 Undeliverable, 18.2%
- 1322 Excused, 19.2%
- 519 Not Qualified, 7.6%
- 2189 Summoned, 31.8%
- 11.8% of Population Summoned



Lakewood (Springbrook)

Juror Response in the Community of Springbrook

This Heat Map was created to display areas in the community of Springbrook with increased concentrations of jury summons with no response. 41% of jury summons in Springbrook were not responded to.



- “No Response” Rate increased to 41.4% from 31.8% for all of Lakewood
- Undeliverable % went up from 18.2% to 32.1%
- Completed % dropped from 12.2% down to 6.8%
- Average age dropped significantly compared to the rest of the City



Kenworth Northwest
- Lakewood

Green firs village
apartments

Pine Ridge Apartments

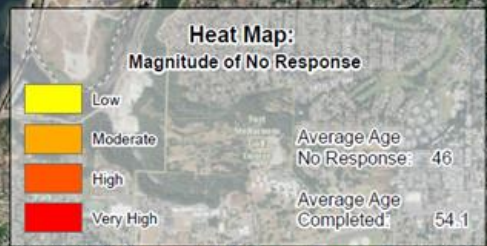
23rd Ave

Juror Response in the City of University Place

This Heat Map was created to display areas in the City of University Place with increased concentrations of jury summons with no response. 22% of jury summons in University Place were not responded to.

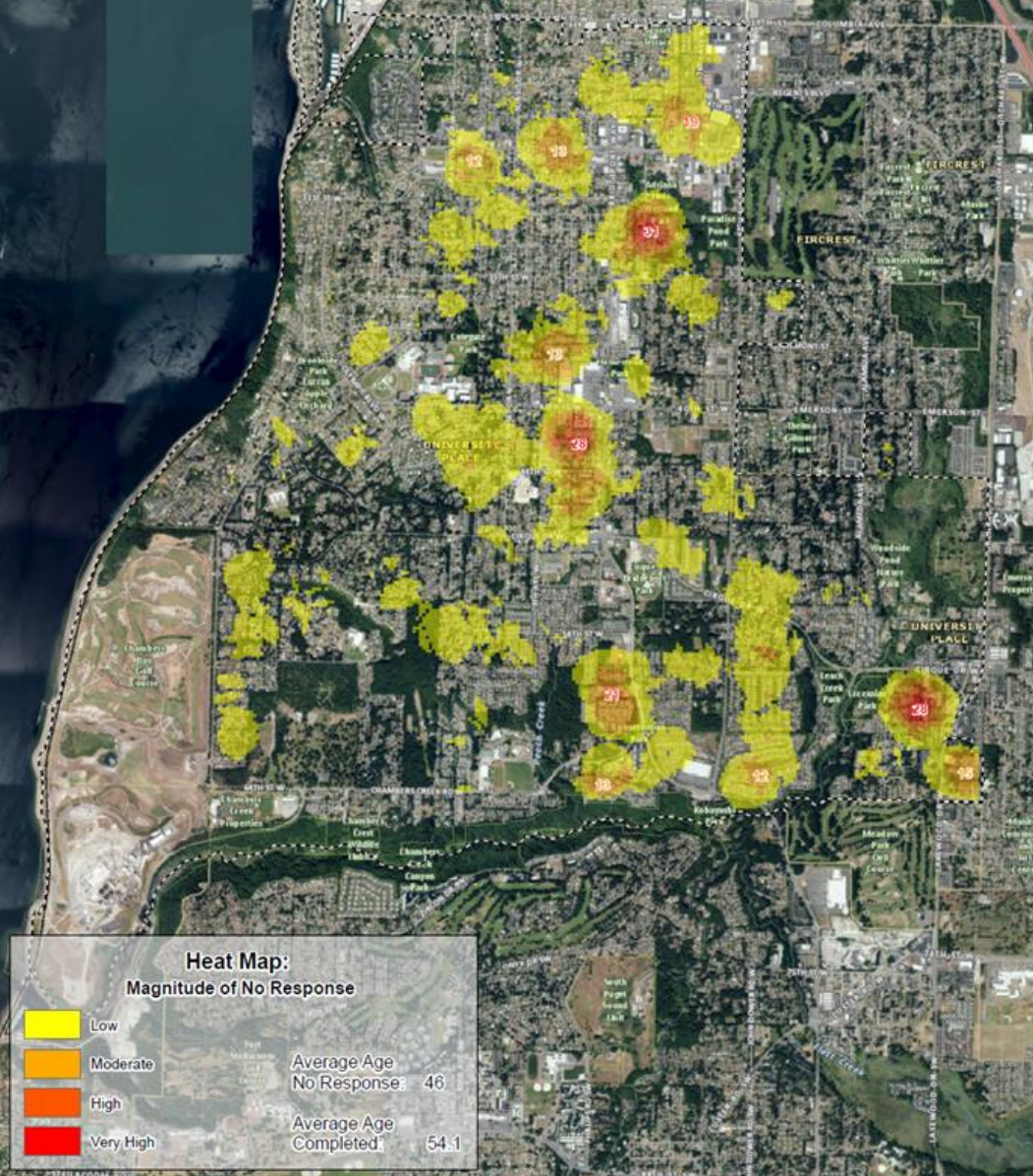
City of University Place

- Population – 31,144 (2010)
 - 71% White
 - 8.5% African American
 - 6.7% Hispanic/Latino
- “No Response” Rate 22%
- Avg. Age “No Response” 46
- Avg. Age Completed 54.1



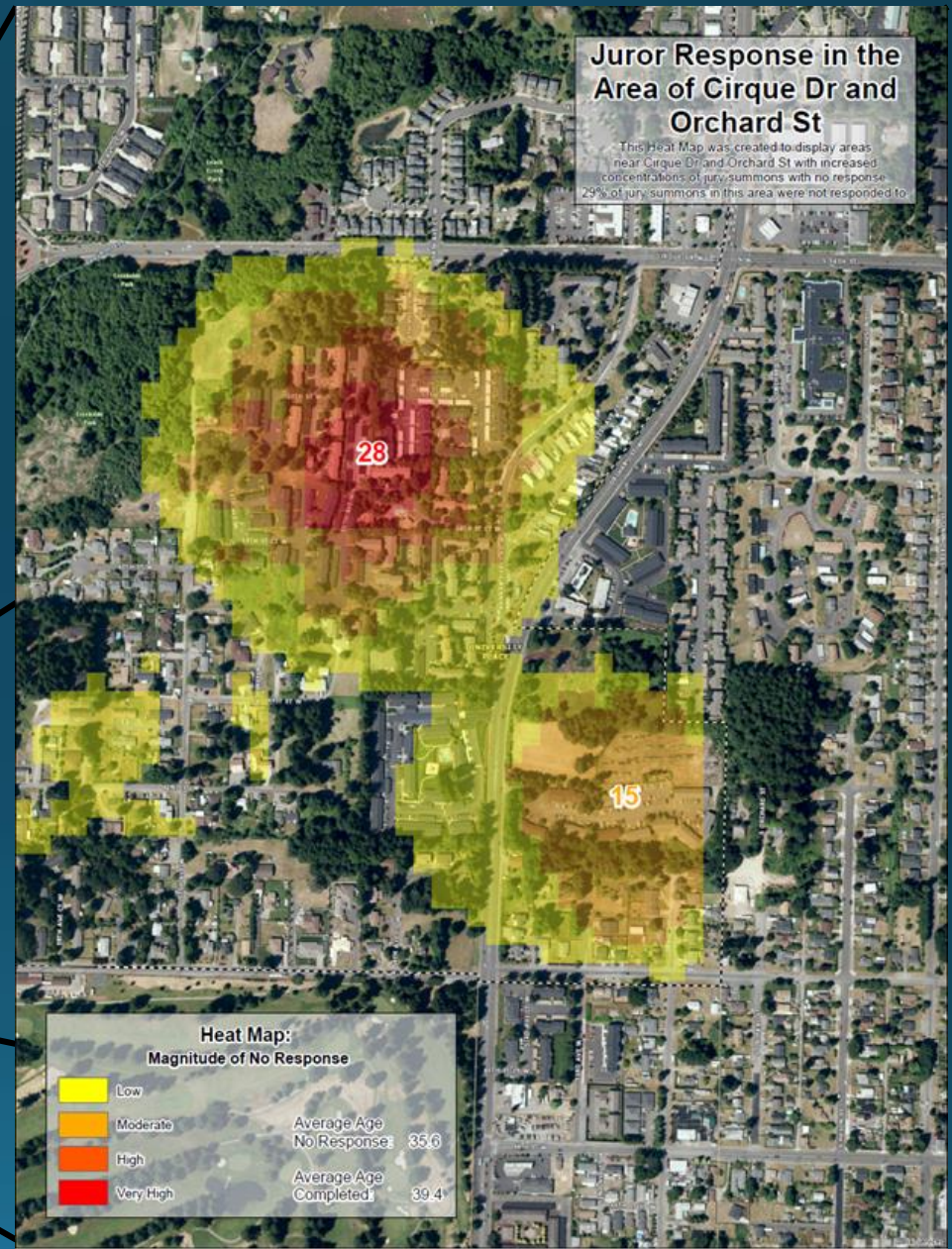
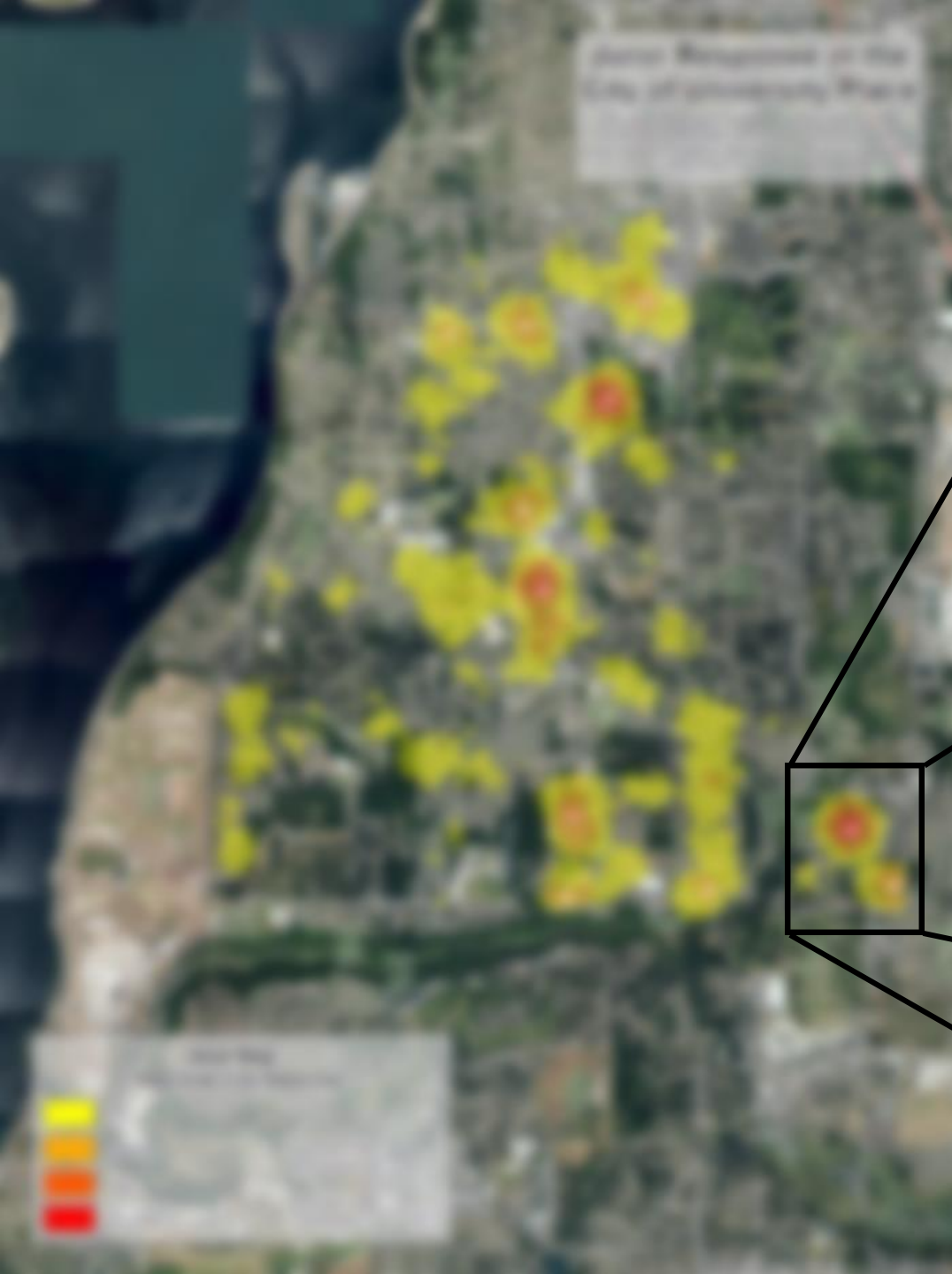
Juror Response in the City of University Place

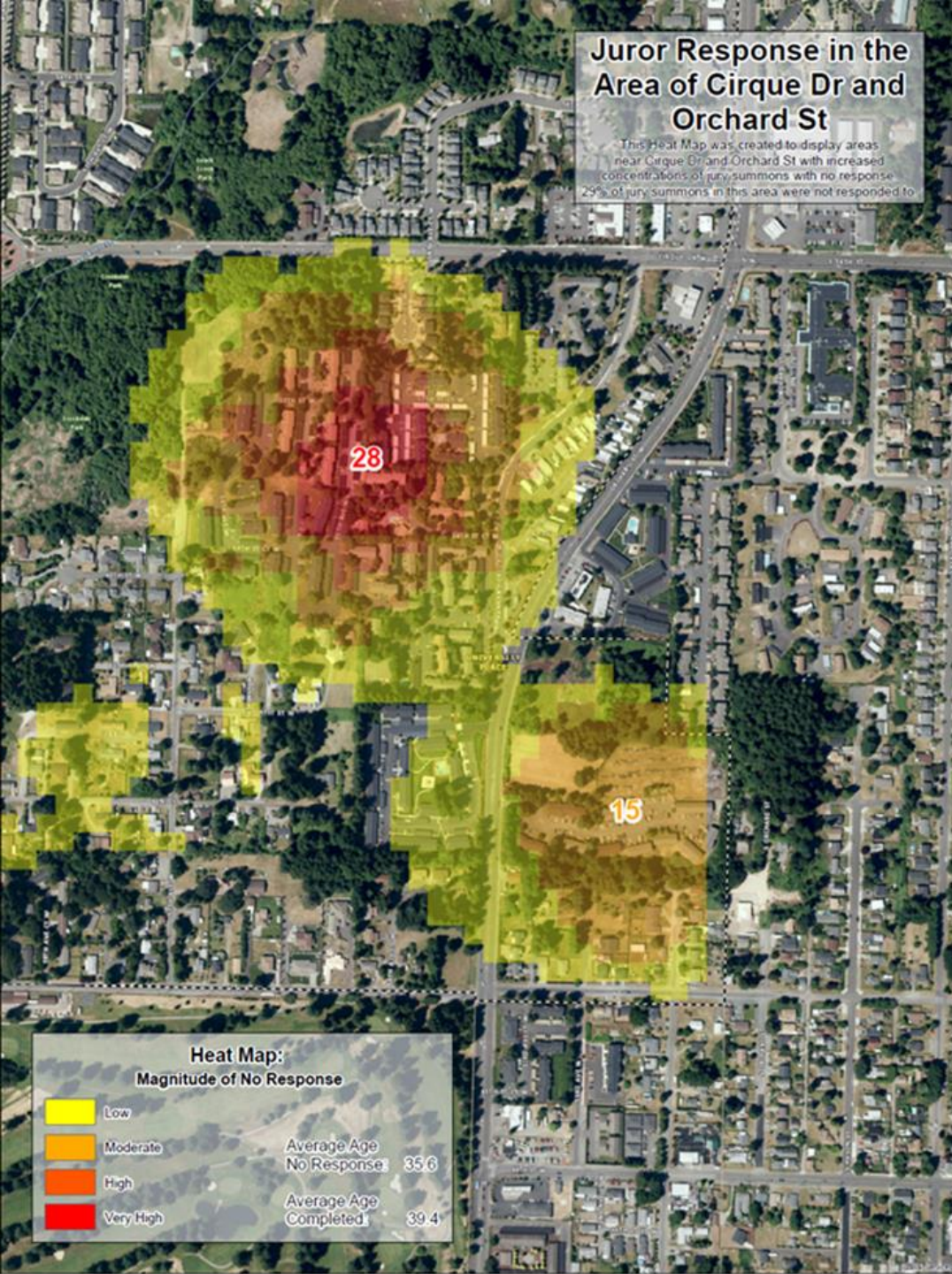
This Heat Map was created to display areas in the City of University Place with increased concentrations of jury summons with no response. 22% of jury summons in University Place were not responded to.



City of University Place (Cont.)

- 3771 Summons sent in 2016
- 667 Completed, 17.7%
- 459 Undeliverable, 12.2%
- 951 Excused, 25.2%
- 332 Not Qualified, 8.8%
- 832 Summoned, 22.1%
- 11.9% of Population Summoned





U.P. (Orchard/Cirque)

- “No Response” Rate increased to 28.5% from 22.1% for all of U.P
- Undeliverable % went up from 12.2% to 32.4%
- Completed % dropped from 17.7% down to 11.6%
- Average age dropped significantly compared to the rest of the City



Valley View Apartments

Orchard Crest

Sunset Ridge Apartments

Park Place Apartments

VIP Auto Spa

Hidden Vale

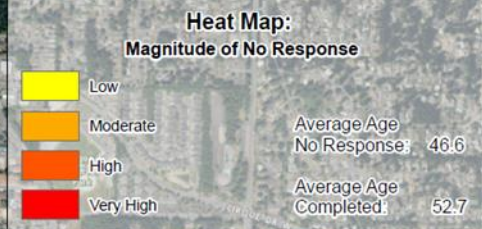
Cottage Spanaway

Juror Response in the City of Fircrest

This Heat Map was created to display areas in the City of Fircrest with increased concentrations of jury summons with no response. 23% of jury summons in Fircrest were not responded to.

City of Fircrest

- Population – 6,497 (2010)
 - 79% White
 - 7% African American
 - 4.6% Hispanic/Latino
- “No Response” Rate 23%
- Avg. Age “No Response” 46.6
- Avg. Age Completed 52.7

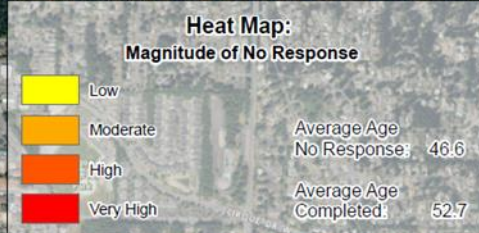


Juror Response in the City of Fircrest

This Heat Map was created to display areas in the City of Fircrest with increased concentrations of jury summons with no response. 23% of jury summons in Fircrest were not responded to.

City of Fircrest (Cont.)

- 762 Summons sent in 2016
- 134 Completed, 17.6%
- 58 Undeliverable, 7.6%
- 210 Excused, 27.6%
- 48 Not Qualified, 6.3%
- 179 Summoned, 23.5%
- 11.7% of Population Summoned





- There is no individual data available for this hotspot in the north end of Fircrest at this time.
- Pierce County GIS Department can create this information, but at the time this PowerPoint was created it was not available.



	Lakewood	Springbrook (Lakewood)	University Place	Orchard/Cirque (University Place)	Fircrest
Summons	6873	365	3771	207	762
No Response	2189 – 31.8%	151 – 41.4%	832 – 22.1%	59 – 28.5%	179 – 23.5%
Completed	840 – 12.2%	25 – 6.8%	667 – 17.7%	24 – 11.6%	134 – 17.6%
Undeliverable	1249 – 18.2%	117 – 32.1%	459 – 12.2%	67 – 32.4%	58 – 7.6%
% of Population Summoned	11.8%	N/A	11.9%	N/A	11.7%

	Summoned	"No Response"	% of Total	Completed	% of Total	Sworn/Seated	% of Total
2012	76,760	21,907	28.5	10,567	13.8	3,304	4.3
2013	84,153	22,286	26.5	11,923	14.2	3,743	4.4
2014	80,310	21,010	26.2	11,580	14.4	3,106	3.9
2015	82,366	22,056	26.8	11,361	13.8	2,979	3.6
2016	93,221	26,004	27.9	14,053	15.1	2,776	3.0

What are our takeaways?

- An equal percentage of the population is summoned in each municipality
- Highest “No Response” rate is in the City of Lakewood
- When examining higher transient living situations, “No Response” rate increases
- Undeliverable rate is highest in transient living situations, when compared to the rest of the municipality
- Are there alternative solutions to address the undeliverable rate?
- Could we add cell phone numbers as a way to summons jurors?
- There can be assumptions made about the results of our study, but more data from the TPC Health Department is needed to draw accurate conclusions.

What are our next steps?

- Collaborate with Tacoma/Pierce County Health Department.
- Investigate creating other layers which would show arrest location and residence location for criminal defendants.
- Present to University Place, Lakewood and Fircrest City Council Meetings.
- Provide handout for inclusion in newsletters and direct mailers on importance of jury service.
- Attend community events with Superior Court staff.
- Investigate ways to expand this study, possibly by turning it over to a news organization or a University for further review.

Any Questions?

Chris Gaddis

Pierce County Superior Court Administrator

cgaddis@co.pierce.wa.us

253-798-3963

To find out more about our court, please review our 2016 Annual Report, which can be found on our website.

<http://www.co.pierce.wa.us/5246/2016-Annual-Report>